



Madison County Soil and Water Conservation District Newsletter

Annual
Meeting



THE BUG DOCTOR

Purdue's Elite Entomologist Dr. Tom Turpin

Date/Time: Thursday, March 7th, 2013 6p

Place: Madison County 4H Building

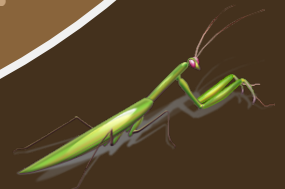
Cost: Dinner and Speaker \$5 per person

RSVP: 644-4249 Ext 3 (pay at the door)



Whether you grow 1000's of acres of corn and soybeans or take delight in raising maters for your summer burgers, everyone can admit being bugged by bugs! Tom Turpin is the funny man that can answer all your questions. Tom has taught Entomology courses at Purdue University since 1971. He developed an introductory entomology course called, "Insect Friend or Foe" that became one of Purdue's most famous courses and averaged over 400 students a semester! He has been President of the Entomological Society of America and has won more teaching awards than we have room to tell you about. He has had his own radio program, newspaper column, was a featured speaker at Disney World and completed many presentations at zoo's all over the nation. He created Purdue's "Bug Bowl." This event is a celebration of insect science with 20K-35k visitors attending this event every year.

Tom has agreed to entertain us with his **insect cooking skills** while educating us on the topic of **"Insects and the World Food Crisis."**



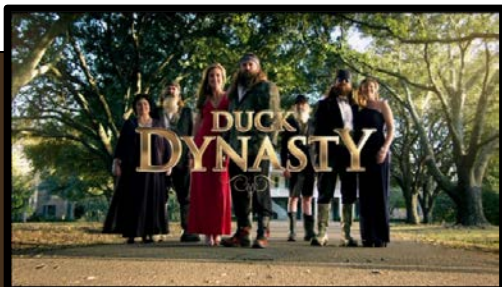
Conservation Corner

By Chanda Hiatt

I have worked with Steve Schmidt for almost five years now. I remember the day I was informed I would be working with an I.U. graduate. I am a Purdue Boilermaker and I will not lie, I was concerned. But after a few months, it was evident that the board knew what they were doing when they chose us. I cannot speak for Steve, but I have noticed ways that each of us have rubbed off on one another. Now do not get nervous, he has not talked me into anything crazy like watching Hoosier basketball, but he has helped me broaden my horizons when it comes to the programming I watch on television. I still watch television through an antenna. One of the reasons I have decided to not purchase cable TV is that if I had CMT, where I could watch George Strait and Blake Shelton sing to me all day, I would not get anything done!

It started out innocent when Steve mentioned how much he and his wife had been enjoying the series JUSTIFIED which airs on the FX channel. I took a leap of faith and bought the first season at Wal-Mart. I have been hooked on the adventures of Raylen Givens and Boyd Crowder ever since! A few months later, things started to get worse. Steve tells me about his favorite reality show. He said "It is about these rich rednecks." I am not a fan of the drama of reality TV, but once again I found myself at Wal-Mart putting The Best of Duck Dynasty in my shopping cart. I have spent \$7.50 on stupider things right?

One Friday evening, the kids and I watched our first episode of DUCK DYNASTY. On Sunday afternoon, the kids said, "Can we watch it again?" We have watched the DVD several times and I have really enjoyed getting to know the Robertson family along with thousands of other Duck Dynasty fans across the USA.



Duck Dynasty is a quirky little show about a family from the bayou who has taken their love of duck hunting and turned it into a thriving family business. The Robertson family proves that just because you wear Mossy Oak and can shoot a gun, does not mean you know and practice conservation. Conservation is a lifestyle, a heritage, a responsibility. That makes us here at the SWCD "Happy Happy Happy".

I love the term re-purpose. The Robertson's are great at this. In the episode entitled "Redneck Logic", the boys take an old camper that Mama Kay wanted disposed of and they repurposed it by making it into a blind for duck hunting.

If you are a fan of Duck Dynasty you will know that they are not just duck hunters, they have the skills needed to truly live off the land. They do not kill a deer, duck, frog or squirrel merely for sport, but they consume what they take. They do not take too much, but only what they need. In the show, Uncle Si Robertson tells a story of how he received a care package from his mom while he was in the Vietnam War that contained a plastic Tupperware cup. He still consumes sweet tea from it. We live in a society where things are easily replaced if lost. It says a lot about Si's "keep it for life" mentality. Si looks at conservation one plastic cup at a time.

The family understands that we cannot just take from the land and never give back. In December of 2012, they joined with over 800 organizations that signed a letter to send to Congress in support of the restoration of Mississippi River Delta's wetlands. If you want to know details about their efforts go to www.vanishingparadise.org. "I go back to when I was a kid and the greatest escape I had in the world was when I was out in the wild, in the woods and on the water looking at ducks, whether we shot them or not," Jase Robertson said. "I just enjoyed the true Louisiana experience. We want to preserve that and pass it on."

I know that the Robertson's conservation corner is different than ours. It is my hope that their behavior will spark the preservation of land right here in Madison County. Now we're cooking with peanut oil!

Madison & Delaware County's On Farm Network

By Steve Schmidt



Nutrient leaching and runoff from agricultural lands is a recognized water quality issue in the Midwest. Both surface runoff and sub-surface tile drainage systems carry nutrients such as nitrates and phosphorous into drainage ditches, creeks, and rivers. The White River, around the Muncie area, suffered

a strong algae bloom in 2010 due to an overabundance of nutrients in the water and ideal weather conditions. Muncie's drinking water developed a strong, unpleasant taste and smell. Prairie Creek Reservoir was treated to kill the algae that posed a potential hazard to swimmers, pets, and others. These nutrients come from both agricultural and nonagricultural sources. The combined total land area for these two counties is 540,191 acres, of which 347,506 acres are in cropland. Some croplands in both counties receive manure applied as a fertilizer source, while most others are treated with anhydrous ammonia.

With these facts, the Madison and Delaware County SWCD's have worked in conjunction with the Indiana State Department of Agriculture, the Indiana Conservation Cropping Initiative, and the Iowa Soybean Association to test corn plants for their use of nitrogen; how much is needed, how much is applied and the amount "taken up" by the plants. The methods involved to make these determinations include stalk sampling and analysis, and aerial photography. It helps agricultural producers determine whether their current levels of nitrogen applications in corn are optimal, without exceeding the ability of the corn plant to utilize the amount applied. Timing of application will be important in determining if the nitrates applied were able to be used by the plants, or lost due to leaching or runoff. Nitrates are water soluble, and will readily travel with the water through the soil unless taken up by plant roots or temporarily stabilized by soil microbes. The sampling will occur shortly after corn kernel maturation occurs. As corn approaches physiological maturity, plants stressed for nitrogen will export nitrate from the lower cornstalk to the ear, significantly reducing nitrate concentrations in the stalk. If plants have more than they need to obtain their maximum kernel production, nitrates will accumulate in the lower portion of the stalk. Aerial photographs taken during the height of the growing season give further information by allowing examination of plant color across a field. Intensity of green color is a good indicator of plant nitrate content and can show patterns across fields of uneven application, drainage problems, compaction and even differences due to soil types. Intensive record-keeping to relate application rates and timing to results is part of the project. The ultimate objective is to give farmers a tool to help them make wise decisions about nutrient application. The results of the analyses for the fields enrolled in the project are compiled in a final report presented to each producer involved. We are hoping the participating producers will include some of these methods on a regular basis as another management tool. The information received through this program should enable producers to take advantage of the data, which will result in a decrease in over-application of nutrients (saving \$\$\$) and will contribute to a reduction in nutrient run-off and leaching. The data will be added to a larger mapping system being developed for the state of Indiana, as five other areas in the state are participating in this project.



Attention Madison County Producers

Have you thought about applying cover crops by aerial application but did not think it would be affordable? We here at the SWCD are assisting any interested producers with the organization of a mass fly on! This will guarantee that everyone receives excellent rates. Whether you are undecided about cover crops or are a cover crops guru, anyone that is interested needs to call our office soon. The time to think about fall cover crop seeding is now!

765-644-4249 ext 3

Do you live in Adams,
Fall Creek, Green, Stony
Creek, Anderson or
Union townships?
Then you may be
eligible for \$\$

(Qualifications are dependent upon map boundaries)

Cost-Share Programs Help Landowners Put Urban Conservation Practices in Place

Financial assistance is available to landowners in areas of Hamilton, Hancock, Marion and Madison Counties who wish to implement conservation practices that reduce storm water runoff, help with drainage concerns, and contribute to clean water and soil health. Several cost-share programs are available to offset the expense of urban practices in the Fall Creek and Upper White River watersheds. Practices are varied and could include rain gardens, bioswales, water edge enhancements, filter strips, invasive plant removal, prairie plantings, tree plantings, and woodland and wildlife habitat.

Funds are limited and will be dispensed on a first-come, first-serve basis, so apply early. For application deadlines and details, contact Leslie White, Fall Creek Watershed Partnership Backyard Conservation Coordinator with the Soil and Water Conservation Districts of Hamilton, Hancock, Madison and Marion Counties at 317-773-2181 or leslie-white@iaswcd.org.



Pond Workshop

Saturday April 6, 2013

10a-12 noon

Anderson Public Library

(Miami Room 3rd Floor)

The Madison County Soil and Water Conservation District is proud to bring you Jason Doll from Fish Pro to answer all your pond questions! Jason is a certified fisheries professional with over 10 years experience in aquatic biology. He wants to help pond owners get all their questions answered by covering various subjects.



If you plan on coming to this event please call our office at 765-644-4249 ext 3.



- How big is my pond?
- Maintaining Pond Water Quality/Testing
- What fish should I stock?
- How many fish should I stock?
- Managing existing fish populations
- Yellow and Black Grubs in fish
- Fish Kills in Indiana
- Aquatic Vegetation Management
- Chemical Control of Vegetation
- Biological control of Vegetation
- Aeration
- Fountains



Fish Re-stocking Sale!

We are currently taking orders for fish!

Call our office or attend Pond Workshop to get your copy of the Fish Restocking Order Form!

Orders due April 26, 4p.

Fish pick up day Sat May 4 10a-11a

It's hard for the modern generation to understand Thoreau, who lived by a pond but didn't own water skis or a snorkel.

Bill Vaughn

SWCD Rentals



The No-Till Drill has three separate seed boxes. One seed box is for small seeds, one box is for larger seeds such as oats, rye, or various grasses and the third box is designed for large, fluffy seeds such as warm season grasses. It is the perfect tool to seed pastures, filter strips, winter cover crops, alfalfa, prairie plantings, and grassed waterways.

RATES:

\$10 / acre
 \$50 minimum
 \$25 delivery fee (Madison County)
 \$35 delivery fee (Adjacent Counties)
 \$75 charge for late return



We were granted funding by the Clean Water Indiana Program to purchase our tree planter. If you have ever planted trees by hand, you will know how much work and backache our planter will save you! Reserve the tree planter today for your windbreak, wildlife habitat, or hardwood tree planting! In order to use the tree planter, you will need two people and a tractor with at least 75 horsepower. The tractor must have a 3-point hitch.

RATES:

40\$ / Day
 3 day maximum use limit
 \$25 delivery fee (Madison County)
 \$35 delivery fee (Adjacent Counties)
 \$75 charge for late return

INDIANA GARDEN SCHOOL

Saturday April 6, 2013
9a-3:30p
 Madison Park COG

Join us for expert speakers, workshops, lunch, door prizes and vendors! This event is sponsored by the Madison County Master Gardeners. For detailed information call Steve Doty at 317-485-5593 or go to www.madisoncountymastergardener.org

2013
Plat Books
Now Available!
\$20 each cash or check

Would you consider receiving this newsletter by email?

This saves the SWCD on postage and enables us to put more of our budgeted funds on conservation efforts. If so, please call our office at 765-644-4249 ext 3 and speak with our staff. We appreciate your support!



Garland Antrim of Elwood Indiana has served on the Madison County Soil and Water Conservation District board for twelve years. In a few weeks Garland will be stepping down from the board.

When Steve and Chanda first met Garland one of the first things he ever said to them was "Have Fun!" Most people think that having fun means that you're not doing your job. They soon learned that they did their jobs better by having fun and enjoying the journey along the way.

Of course, he is always reminding every guy he meets to make sure he is bringing his wife flowers on a regular basis. One of the reasons that you enjoy a newsletter printed in color is because Garland is a big believer that life is better in color.

So from the Madison County Soil and Water Conservation District board, Steve Schmidt, Chanda Hiatt and all the gang at Farm Service Agency.....

We are going to miss you Garland!

DOES YOUR FAMILY'S DRINKING WATER SUPPLY COME FROM A WELL?



As a homeowner you are responsible for it's safety!

The Madison County Soil and Water Conservation District is proud to announce the WELL WATER INITIATIVE. According to the IDNR website there are 10, 732 wells in Madison County. If your drinking water comes from a well you are responsible for your water's safety. The government does not regulate or test private wells. Well water should be tested annually for bacteria and nitrates. The well water initiative is a program that is designed to help Madison County residents do just that at a reasonable price.

Why Test?

When you pour a glass of water, you expect it to be pure and safe. However, pure water rarely exists in nature. Water absorbs minerals, organic materials, and organisms as it moves through the air and soil into surface and ground water supplies. So, while most water appears clean and problem-free at the tap, it may not be safe for drinking or acceptable for household activities. Taste and odor are not always indicators of water quality. Contaminated water can taste and smell fine, while unpleasant-tasting or smelling water can be safe to drink or use.

If you are one of the 1.7 million private well owners in Indiana, you should know that you are responsible for monitoring the quality of your water. Testing will help confirm if a problem exists, or give you peace of mind when there are no problems with your water. If necessary, appropriate treatment will be recommended.

Source: Purdue Extension

Publication, WQ-4

Total coliform/E. coli - Bacteria often found in water and soil that indicate fecal pollution. Symptoms such as diarrhea, dysentery, typhoid fever, urinary tract infections, flu-like abdominal pain, etc. may be spread through fecal contaminated water.

Nitrate - Common sources of nitrate contamination include fertilizers, animal waste, septic tank run-off, and sewage run-off. Levels of nitrates exceeding 10 mg/L as nitrogen have been shown to cause methemoglobinemia in infants. This results in oxygen deprivation, which may be harmful to the developing nervous system of young children or could cause death by suffocation. Symptoms include chocolate colored blood, headache, flushing of the skin, vomiting, dizziness, marked fall of blood pressure, collapse, coma, and respiratory paralysis.

HOW DOES THE WELL WATER INITIATIVE WORK?

To get started you need a test kit!
Now until April 23rd 2013 test kits can be purchased for only \$30.



Each test kit will test for both
Total Coliform and Nitrates.

Special Note: If you are interested in other types of testing such as heavy metals, lead or others, they are available at an additional cost. Call our office for more information.

Once you purchase your test kit you will then be required to pull your water samples as directed and drop off your water samples to our office on

Wednesday April 24, 2013
from 7a-7p

Results are confidential and will be sent directly to you from Environmental Laboratories, Inc.

There are lots of ways to purchase a test kit. We will have them available at our office or they will be available at most all our events. We accept cash or check. If you have questions please call our office at 765-644-4249 ext 3.

182 W 300 N
Anderson, In 46012



Check us out on
Facebook!

We are over 1000
friends strong!

Madison Cty SWCD



You teach your soil
how to treat you!



Soil Testing

What kind of relationship do you have with your dirt?
Wish you could find an affordable place to have your garden or yard soil tested. Do you feel like your soil doesn't listen to your needs? Have you considered the possibility you're not listening to the cries of attention your soil so desperately requires? Wish you had the information to make changes, so your plants and lawns are all they can be?

Know the health of your soil.

The Madison County Soil and Water Conservation offers two great tests at low prices everyone can afford!

Test #1 PH, (Buffer) PH, Potassium, Calcium, Magnesium, Zinc and Phosphorus **\$20**

Test #2 Micronutrients Boron, Copper, Iron and Manganese **\$25**

Directions

1. Purchase your soil test kits from our office 765-644-4249 ext 3
2. Return your test kit with soil sample to our office
3. Your soil testing results will be mailed to you!

